

Chapter 1

Freedom Structures

Over many years I practiced attunement to an inner peace, a center of profound awareness and wisdom. In so doing I attuned to other beings of light who helped me to understand. My background of science and university teaching meant that I was careful to avoid delusion and to rest my conclusions on detached observation. In doing this, I found that I had to acknowledge the surpassing beauty and peace of what I saw. This was no foolish yearning for a cotton-wool heaven, but a clear-headed appraisal of an immense world of wisdom and transformation. It enabled me to link scientific knowledge to the knowledge intuited from the higher sources, and to derive a purpose for evolution that includes consciousness as a central factor, and that includes the transformation of the very fabric of space-time.

But we must begin at the beginning, by establishing the evidence for universal stages of development, the progressions of capacity of all things. When we establish this, we can move to a more general model of souls, which is of conscious units at various levels of our entire ecological existence. We find that the model and the science then correspond to the deep mythologies of religions and gnosis, which is of thousands of years antiquity. These different viewpoints can be integrated, and the resulting comprehensive model can be applied with effectiveness to our lives now. It shows us the way forward, and it shows us the real issues that we need to deal with now in order to safeguard all life on earth.

This book details this process, and the evolutionary model of life for us all, and provides a means to help one another with so many disturbing issues of today. It is a book fundamentally of hope, for it shows how the depths of despair can help create the joys of enlightenment. It shows that although there is much that is brutish, nasty and dangerous on our planet, we transform eventually into profound wisdom and caring, and that there are now many enlightened and compassionate people working towards a better life for us all.

And what is in store for each and every one of us? I know that we go to a place of astounding vision, one where we know ourselves all, All, to be one in all of conceivable nature. We see beyond space and time into the heart and soul of All, of all our lives, and of the many individual lives that we each have in particular times and places. We know purpose in the pattern of these lives. We see the marvelous intricacy of nature evolving as a creature of splendour, within which we are brilliant lights. We see the mud and the lotus, for we are made of angels' wings and ass's dung. And we see our own flower rising from the mud to sing the glory of the sun, the heavens and the earth. But first, the beginning.

Civilisation Unfolds

Some years ago I was explaining to my wife's aunt and uncle in Melbourne how humanity develops, firstly from primitive tribal hunting to a two-level agricultural society of the elite and masses. I then explained how trade and entrepreneurial activity made possible the next stage of expansion of human culture, to the industrial "takeoff". They were very interested and became silent as I outlined further stages, including some yet to come. Following the

flush of free-market success I showed them that there was a need to take care of all of the people in society, and to regulate the inherent instability and tendency to corruption of the free market. This new welfare or cooperative state was the fourth in a series of major expansions of human civilisation. It also included an increasing concern for the environment.

I then went on to say how, building on the gains of the previous stages in economy, education, communications and politics, a new leading edge culture is developing. This is one of new creativity, of individual entrepreneurial breakthroughs, and yet dependent on the global availability of information, resources, techniques and flexible ways of organising people and activities. It is the fifth major expansion of human capability.

This was news to my aunt and uncle, as they had worked all their lives in the market economy (3rd state) but with a great concern for community well being (4th state). But their silence was palpable when I spoke of the next or sixth expansion, now greatly needed and only just emerging in the consciousness of some people. I explained how the current great diversity of human activities, their unforeseen impact on each other, and their rapidly increasing power to affect the life-support systems of our planet requires their integration and regulation. Integration is needed to organise the new complexity and to prevent all our activities from becoming a tangled mess. Regulation is like our current need for civil laws, but aimed to preserve life globally and to maintain effective societies on our planet.

We now know that human activities are directly affecting our global ecology, resulting in global warming and climate change, acid rain and oceans, and probably ozone layer depletion. We also know that chemical, electromagnetic and nuclear pollution is causing considerable ill health and needs to be changed for the better. The new integration would help increase human creativity, but within limits that preserve human life and planetary well being for all. The growing complexity and potency of our actions requires it. However, it is extremely important that the process of global integration is truly democratic and has the well being of the whole world at heart. If it is captured by limited interest groups then it could have a devastating effect on economies, cultures, ecologies, health and global political stability.

I then pointed out the inevitable conclusion of the success of global integration in a democratic manner. This would be the last or seventh major expansion of human culture, the creation of a “heaven on earth”. Even if we succeed in the earlier stages, this last one is likely to be far into the future, given the time needed for cultural and social change.

At the end of my brief talk, my aunt said simply “you ought to lecture”! I had explained that these seven states of expansion were found in modern studies of economy, science, religion, politics, business, morality and psychology. This means that they are very likely to have a global psychological and cultural basis. What I did not go into then was that they also have a correspondence in the physical and biological sciences, and in metaphysics.

At first it seemed coincidental that the atom has seven states of energy known as its electron shells. As a result of this structure, the periodic table of chemical elements is ordered vertically according to the number of active shells¹. This means that through chemistry all physical substance has a structure based on seven states of energy and therefore seven levels of physical organisation. The correspondence with the Western musical octave is clear when we equate the energy frequencies of the atomic shells with the frequencies of sound. This is important because everything has its frequencies, including brain waves and therefore human

consciousness. This is a physical link with the seven major levels of psychology and their manifestation in everyday life.

However, this connection between physical and social structures is supported by the older teachings about the nature of mankind and the universe. These teachings were a part of the early mystery schools, and are only now being gradually recovered. The link between the seven human states and frequency or music is also through the frequencies of our subtle bodies, which are organised in a major octave of seven parts. Energy frequency thus becomes the link between the physical, the biological and the human, between the substance of our nature and our psychologies, and hence how these work out in our culture and society.

Have you ever wondered why the number 7 is repeated so often in the Bible and in other holy and wisdom teachings? References to it come from the depths of history, from many thousands of years ago. There is a high wisdom in these teachings, which usually cannot be taken literally, at face value. With correct interpretation they contain a precise story of the creation, evolution and apotheosis of the universe, of mankind and of all life. At the human scale there is the story of the birth of humanity, its growth in seven stages, and its eventual ascension to a higher kingdom of being. What is wonderful about these wisdom teachings is the structural correspondence between all kingdoms of nature in the process of evolution.

I have set out in this book to explain to my aunt and uncle firstly the human basis for the seven stages of development. I then bring in evidence from the physical and biological sciences, and relate it to the symbolic stories of creation, evolution, revelation and the millennium in the Bible and in other esoteric works. From this I propose an integrated and fractal² model of development that can be applied to almost any situation. I then look at some serious and urgent issues that need our attention right now for our long-term survival and progress on our planet.

The Science of Faith

How many of us know the true meaning of “faith is the substance of things hoped for, the evidence of things not seen” (Hebrews 11:1)? Yet it is the clue to our creation of everything that has ever “happened to us”, and that will ever happen. This faith is simply what we expect in our hearts, with varying levels of certainty, and is not a religious dogma. As individuals, and as societies, we direct our lives by imagining what we truly hope for, and then we create them by our knowing that we can and will do it. If that faith is lacking, we will be unable to create what we have imagined. This faith can be one with the most profound spiritual beliefs, but it works just as well for the atheist or the believer in the black arts. It assures that we get what we hope for.

The immense sweep of our civilizations ancient and modern was created by our capacity to hope and imagine. A building exists in the architect’s mind before it is built, and the prevailing economy and technology provides the know-how for it to be built. In this sense we can understand faith as evidence of things unseen. Can we therefore take on faith some aspects of the future? This will depend on what we hope for, and importantly, how we know we can accomplish it.

There is a clue, a guide, to how our future will unfold. It was discovered by searching modern scientific studies, and analysing older wisdom teachings. The guide is an archetypal structure for all human development that identifies stages of unfoldment, includes awakening

knowledge, creativity and choice, and integrates profoundly with our total environment. It predicts the outline of our future. It is evidence of things unseen.

Because we should not accept any guide on blind faith, the first part of this book goes to lengths bringing together modern evidence of the archetypal structure of our unfoldment. The second part extends the human evidence to a more universal archetype that can be seen in other kingdoms of nature, and brings in evidence from wisdom mythology. The final part answers a “so what?” query by applying the guide to both the future and to our current needs and activities. It concludes that we are indeed in the middle of what the Chinese would call “interesting times” that contain great threats but just as great opportunities.

A Peek at the Conclusion

There is a grand plan for the evolution of humanity, a plan that is both spiritual and scientific. It is a practical plan that we all take part in, and has a “great attractor” that draws forth the development of humanity, and on a larger scale, our world. This “plan” has operated for eons, and the great wisdom teachers such as Hermes, Krishna, Lao Tze, Buddha and Christ are a part of it. It works on us individually and culturally, unfolding our awareness and capability until we become co-creators with higher forms of consciousness. Modern science and ancient and modern wisdom teaching provide an outline of the plan. We can use it practically in all of our lives.

It seems that we all grow and unfold according to a structure common to our planet. The structure is based numerically on the one becoming the three, which then becomes the seven³. There is scientific evidence for seven stages of human development that can be matched with esoteric writings about the seven stages. It includes a fractal scaling whereby each level can be subdivided into seven sublevels, and is itself part of a larger level.

These seven stages of development are our freedom structures, because they progressively free us from the painful aspects of materiality, the lower emotions and ignorance. They progressively expand our capacity for love, intelligence, discernment, and illumination, leading eventually to joyfulness and a deep peace.

The stages are a ladder of evolution, and their fractal nature indicates that the “great attractor” exists everywhere in evolution. The attractor is like a flexible blueprint that we respond to, and that exists throughout the solar system and perhaps the universe. It has a number of planes of substance, or bands of frequency in space-time.⁴ It appears to be derived from a genetic archetype beyond space-time, and this is taken up in later chapters.

You and I choose how and when we unfold our potential at each stage. Our growth in understanding, discernment and free will is a part of the evolutionary structure. Our ascension through the stages is inevitable, but how quickly and how we do it is up to us.

In the early phase of development we are impelled by our physical and emotional appetites to gain worldly experience. In the middle phase, we become self-consciously aware of our choices and values, and set out to take control of our lives. In the third phase, we set course for the good, the true and the beautiful, and in so doing return to oneness, love and omniscience.

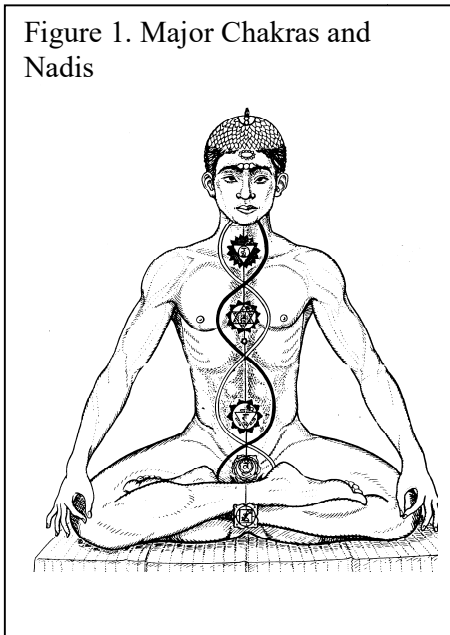
The Hermetic saying, “as above, so below,” means that life in the cosmos, in human form, and in sub-human forms has similar structure and dynamics. The fractal attractor unfolds networks of energy flows in these forms, flowing between vortices that are centers of consciousness. The energy is both life and consciousness, and in essence has the form-building quality of love. This great structure is made up of the “livingness” of people, of planets, of all the kingdoms of nature, and essentially of the entire cosmos. We are all alive, interconnected, and conscious to a greater or lesser degree, with the greater degree embracing the power of love that is so immense as to bring forth the very best in the evolution of our planet and the people on it.

The Sevens

We now need to look at some of the ideas that the great plan of life and our place in it are based on.⁵ Human psychology has been divided scientifically into seven stages of awareness, each having more capacity than the level before. These stages represent humanity from its earliest beginnings to the enlightenment that precedes the end, which is the ascension from the human kingdom. The stages are described in early Eastern psychologies and have been rediscovered by Western psychologists and social scientists using empirical methods.

The seven levels are in the structure of the body as energy centers. In wisdom teachings, the physical body is made up of the gross physical and the etheric physical, and we also have emotional, mental, and spiritual bodies of substance.⁶ Of the seven sub-planes of the physical plane, the three lower are the solids, liquids and gases. The four higher sub-planes are collectively called the “etheric body” and are part of the physical body.⁷ The most physical components of the seven major energy centers are found on these higher sub-planes of the physical plane. These energy vortices also extend into the emotional, mental and spiritual bodies, and are keys to human development.

Figure 1. Major Chakras and Nadis



The etheric body is a wonderful thing, a flow of energy analogous to a complex filament in a light bulb. As the body’s energy or electricity flows through it in seven progressions, the filament gradually lights up from bottom to top. In Ecclesiastes (12:6), it is called the “golden bowl.” It is made up of the seven major energy centers and innumerable lesser ones, all interconnected by energy channels that energize the whole body. A major triple channel directly links the seven major centers (see Figure1).

In Hindu literature, the energy centers are called *chakras*, Sanskrit for *wheel*, because they appear as revolving energy vortices. Connected by channels called *nadis*, the seven major chakras are aligned from the base of the spine to the top of the head, and each is attributed with a specific quality of

consciousness. At the beginning of human evolution, the filament of the etheric body is without much light, and the chakras are dull and quiescent. As evolution proceeds, the filament’s light and color increase, and the chakras become increasingly active and bright from base to head as we become more aware, wise, purposeful and radiant. Seen

clairvoyantly, the pattern by which the various chakras light up, and their color and radiance, show the essential psychology of the person. When our evolution is complete, the etheric body is brilliantly radiant and magnetic. It has then become the “city ... of pure gold, like unto clear glass” (Revelations 21:18).

We cannot grow from child to wisdom master in a single lifetime. The development of human consciousness requires a series of lives in which progressive learning takes place. The evidence for reincarnation is now so overwhelming that it is a premise of this book.⁸ It is impossible for a consciousness to evolve from a primitive state to one of supreme enlightenment in even a few lifetimes. We need many lessons in many settings experiencing different ethnicity, sex, religion, affluence, education, to perfect our innate capabilities. As this growth and learning takes place, it is matched in our etheric body by increased radiance and restructuring.

The seven steps in human consciousness as described by the old teachings and confirmed by modern psychology are part of the wisdom teachings of the ages,⁹ and Chapter 8 details their symbolism in the Hebrew and Christian Bibles. The Gnostic tradition and teachings, some of the apocrypha, and some of the Dead Sea Scrolls shed further light.¹⁰ The Hermetic tradition, which was a part of the early Christian church, also expounds on the themes of the numbers 7 and 3 (and the 10 and 12).

Modern psychology and a few other social sciences have rediscovered these seven stages of consciousness, but with a few exceptions they have not understood their relevance to the older teachings. However, the similarity between old and new suggests that the seven stages are fundamental to human nature and profoundly relevant in understanding human development. We can benefit from using them in human relationships, in values and motivations, and in studying how various groups and nations interact. They help correlate the many perspectives within various disciplines, help us understand friends, work colleagues and ourselves, and are immensely practical in working with the various states of awareness in human development.

		Rays						
		1	2	3	4	5	6	7
Chakra Levels	1							
	2							
	3							
	4							
	5							
	6							
	7							

Figure 2a. Matrix of Chakra Levels and Rays

Each of the seven rungs of the ladder can in turn be divided at level into seven *qualities* known as the “seven rays,” which express in people as distinctive styles of behaving. The seven rays are “at right angles” to the vertical dimension of the seven chakras in the present age. This is illustrated by the 7x7 matrix in Figure 2a, which has some similarity to the short form of the periodic table of chemical elements, and so could be called a *periodic table of behaviour*.

The 7x7 matrix creates 49 basic behaviour types. However, people are statistically unevenly distributed across the cells of the matrix. There are fewer of the earlier, primitive types of people on the planet, and there are fewer of the later, more evolved types. Furthermore, not all of the rays are equally represented at any one time. Each cell in the matrix can be seen as a classroom in which we learn about life and how to become more whole.¹¹ Each cell is a stepping-stone, and all pathways through the matrix lead eventually through the other cells to a mastery of the nature of human life. This culminates in a form of divinity, the goal of human evolution. When we approach this level, we start to cooperate with the superhuman kingdoms, which we call “spiritual.”

In any developmental level, a person will express a particular ray quality at that level, and this applies to groups, and to nations. The explanatory power of the 7x7 matrix of living qualities can be extended to cover the entire range of human endeavor. Chapter 3 describes the rays, and chapters 4 and 5 offer some applications of the levels and rays. Of course, this schema will not fully capture all the detailed complexity of life, but it will convey an essential structure and a big picture of human development that can help our understanding, practice and planning in many areas of life.

The Three

“From One Source all things depend; but the Source is from the One and Only. Three then are they: God the Father and the Good, the Cosmos, and Man. God doth contain the Cosmos; the Cosmos containeth Man. The Cosmos is the offspring of God; and Man, as it were, is the offspring of the Cosmos. The Cosmos is, indeed, from God, and in God; but Man, of the world and in the world. The Beginning and the End, and the constitution of all things, is God.”

— Hermes Trismegistus (p.13)¹²

The correspondence to the holy trinity in human form is spirit, soul and personality. The spirit is the essence of the Infinite, of God within us, and the true I AM. The soul is the intermediate Self, the part of us that programs our evolution as human beings. It is intermediate between spirit and personality, putting human form to the impulse of spirit, and receiving garnered wisdom from the activities of the personality. It is the soul that determines the conditions of our present lives, implements the karma,¹³ good and bad, of previous lives, and chooses future life qualities, including the rays.

The personality is the quality and form of our current life through which the soul works and through which we learn in our particular classroom. Made up of the physical and etheric bodies, the emotions and the lower or concrete mind, it dominates the early phase of evolution. Through the personality in any one life we distil wisdom that is stored and used by the soul over many lives. As a result of this wisdom, the soul becomes more prominent until, in the second phase, the personality works under impulse from the soul. Then, in the third phase of human evolution, the spirit responds to our souls’ light until the soul can say, “I go to my Father.”

The holy trinity is central to all major religions¹⁴, is known to Christians as Father, Son and Holy Ghost, and represents divine will, love and intelligence. A personality lasts for one lifetime, the human soul lasts for the entire cycle of lives spent in the human kingdom, and the spirit appears to last for the lifetime of the universe. Each is a form of attractor,

influencing substance and consciousness in the dynamic of evolution. The spirit is the infinite Life living within us and drawing us forth to play our part in the divine plan. It is the hope eternal within us. When spirit then works as faith, it is very powerfully the “substance of things hoped for, the evidence of things unseen”.

The soul has a similar influence for us. As an agent of spirit, the soul draws forth the particular experiences that create the self-consciousness required to co-create our visions on earth. The soul inspires our awareness of oneness and our impulse to help one another. Through it, we create values to live by. Eventually, as soul-infused people, we change ourselves into living light, love and divine purpose. When sufficiently developed, we may pray, meditate and work with saints and angels. As an attractor, the soul reorients humankind towards perfection.

The personality is the coat chosen by the soul in any lifetime. We choose the needed lessons for that lifetime, and the soul qualities to be enhanced in that lifetime. We have the physical bodies appropriate for our tasks and learning in this life. We have the emotional tendencies and the mental capabilities best suited to our further development. To be a unified attractor, the personality must be unified and coherent. If it is not, then each component (such as physical, emotional and mental factors) may be an attractor to its own sub-components, and will influence the other factors in an apparently haphazard manner. The personality attractor will also influence the sub-human kingdoms that are a part of the human body.

At the personality level, if we either consciously or unconsciously expect our life to take a particular form and pathway, and truly believe it, this “faith” creates it. If we truly expect bad things then they are more likely to happen. The optimist is more likely to create a better life. Even our unconscious expectations are the substance of things hoped for. Our limited comprehension and strong desires bring about considerable worldly learning while the personality predominates.

The personality is equivalent to the term “matter” in the trinity, and the three interact profoundly in evolution for mutual upliftment. As Bailey puts it:¹⁵

“Matter, so-called, is energized or “lifted up” in the occult sense of the term by its contact with spirit so-called. Spirit, in its turn, is enabled to enhance its vibration through the medium of its experience in matter. The bringing together of these two divine aspects results in the emergence of a third, which we call the soul, and through the medium of the soul, spirit develops a sentience and a conscious awareness and capacity to respond which remains its permanent possession when the divorce between the two comes around eventually and cyclically.”

There are other names for the trinity and its fractals, e.g., cosmos, sun and earth, or fire, sun and moon, or God, Cosmos and Man. Hermes sees the Cosmos as all that exists within and beyond space-time, God as the undifferentiated cause of All, and Man as the archetypal Son of God:

“For truly first of all is God, the Creator of the Cosmos, the Eternal and Uncreate. The second is the Cosmos, after His own Image, brought into being by Him, by Him held together, nourished and immortalized, as by its own Father, ever free from death. The third life - Man - made after the image of the Cosmos, but having Nous (Divine Mind), according to the will of the Father, beyond other earthly lives, not only has affinity with the second Head (Cosmos), but also intelligence of the first; for the

second he apprehends as a body, but of the first he receives the intelligence as incorporeal and the Mind of God.

- Hermes Trismegistus (p.15)

Implications

The implications of this brief outline of the sevens and threes are firstly that the great plan for humanity implies successive stages of development, and secondly that by understanding it, we can help ourselves and others to improve our lives. But more deeply, when we analyse the archetypal structure of our development, we can see “evidence of things unseen” that points to our future.

This ultimate real future is that the purpose of the great attractor and its “plan” for humanity appears to be nothing less than the creation of heaven on earth. We can choose this over the long span of evolution as we are raised from a primitive state to that of being masters of the wisdom. The seven major stages plus the ray qualities help to explain the nature of human conflict, pain, happiness, and the resolution of problems in this process. The beauty is that each one of us can raise our own vibration and that of our surroundings, and so make a difference. And the applications can be in any walk of life, with any individuals or group of any size. We will see how this creates the basis of a beautiful society, but not before we deal with some very dark aspects of our nature that bring on crises of survival.

Our unfolding depends on the resonance between human consciousness and human structure. The “structure” includes the etheric, emotional, mental and soul substance. Our consciousness limits our structure and vice versa, but as we “push the envelope” by stretching our consciousness, we induce structural change. This in turn allows a wider exchange with the environment and so stimulates its further growth and a more general change of consciousness. There is always a pull from above by the attractor, and a push from below as experience generates wisdom and awareness, which induce further seeking.

All substance has frequency, and the seven generic levels of frequency are present in the human structure. At the broadest level, they range from the frequency of a most elevated spiritual oneness to the frequency of our material body. There are resonant harmonics between levels, as there are between octaves of the musical scale. If these harmonics are in tune, or aligned, then we are more likely to be in harmony and have high energy levels. When the resonance aligns spiritual awareness with mind, heart, will and body, then we have immense creativity for good. You can imagine how this becomes the substance of things hoped for in an enlightened person, facilitating chosen happenings that precipitate in the person’s life.

Any structure of consciousness that draws forth progress will eventually limit it unless it, too, changes. There is thus, as Alice Bailey puts it: “... a constant birth and death of forms, and imprisonment and freedom of consciousness, as we evolve from limitation to the limitless.”

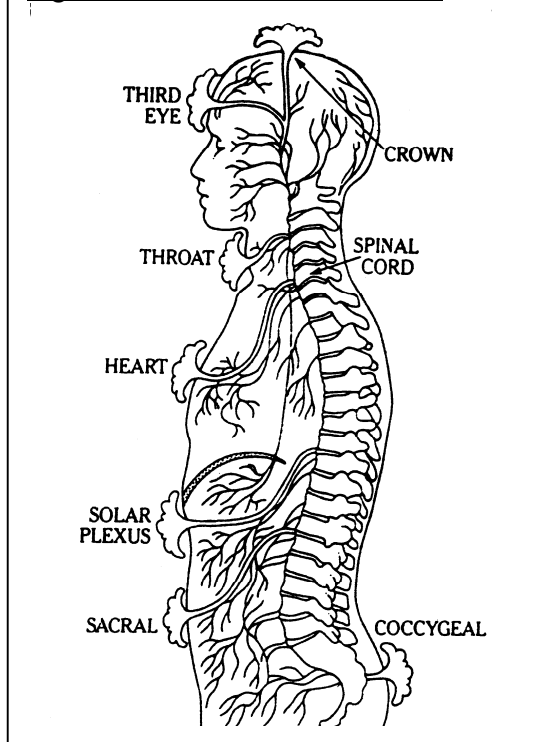
Freedom Structures

We progressively free ourselves from the heavy weight and influence of the material side of life by uplifting and integrating all aspects of our personalities. We free ourselves from the urges of the physical body by controlling it, from emotional impetuosity by developing balance and calm, and from unfocussed thinking by developing mental discipline, inspired

intuition and purposefulness. Each of these freedoms allows us to accomplish more, which expands our awareness and capabilities, and so we evolve into better human beings.

The term “development” means de-envelopment. What is enveloped is the light under the bushel, the infinite capabilities of soul and spirit. That which envelops is the heaviness of early forms and substance, which cloak the intrinsic light within. In developing, we not only “free” ourselves from gross material influences, but we uplift and integrate those material influences into a more enlightened and loving world. In a fundamental sense, we redeem substance.

Figure 3. Chakras and Nerve Plexi



Those who are more evolved, therefore, are more at peace with their bodies and with society. They may not be satisfied with the current status of these, and may seek to improve them, but they understand their role in the divine plan. They will not seek to escape their limitations by retiring from the world but strive to master the material influence and incorporate it into something true and beautiful, to create a living heaven on earth. This is one of our basic roles on earth.

The development of the human from early animal origins is repeated in the womb. We start with the fusion of two cells and, under the mother's generous nurturance, we become fully human by the time of birth. Within the womb the human fetus grows free of the limitations of earlier biological forms. Its complexity increases immensely from the original two cells to the fully formed baby.

Birth marks the transfer of the form from the animal to the human kingdom.¹⁶ After birth, we then see the development of humanity from its earliest origins to present time in stages of unfoldment from infancy to adulthood (birth to about 35 years). Psychologists, most notably Jean Piaget, have suggested that there are generic stages of childhood development. These have some resemblance to the history of humanity proposed in this book. However, other psychologists and social scientists dealing with adults are closer to the seven stages revealed by ancient teachings, and that are part of a more general blueprint of probable structures.

Chapter 2 offers an outline of the blueprint of probable human structures and their qualities. For example, the chakras exist in etheric matter and can be seen and felt by some clairvoyants and sensitives. Their existence is described in writing, symbolism and art works from a range of old cultures. Modern science has mapped components of the etheric or “energy” body, such as the chakras, acupuncture points and nadis, and bio-energy life fields. Also, the literature is replete with personal accounts of the effects of energy movement in the etheric body, such as the raising of the kundalini energy.¹⁷ When we progress, we free ourselves from the limitations of old etheric, emotional and mental structures, and the qualities that they represent, and develop new ones that have absorbed the lessons learned from the old.

The etheric structures are fully integrated with the physical body, the seven major chakras being linked to seven ductless glands and to seven nerve plexuses or ganglia, as depicted in

Figure 4. The Soul, Planes and Chakras

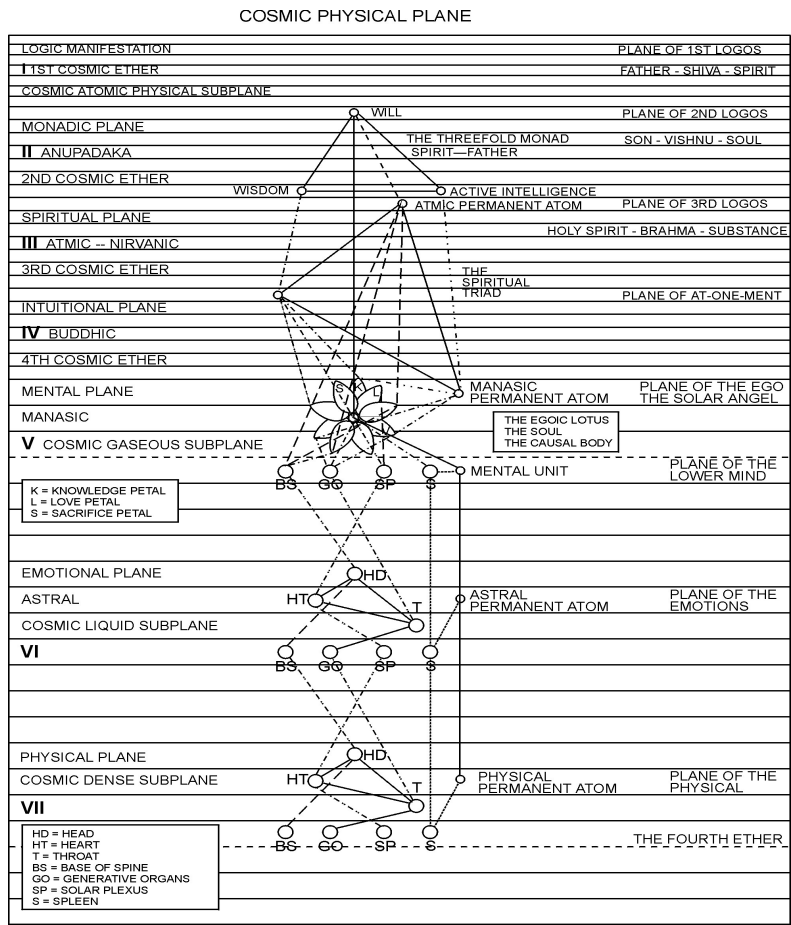


Figure 3. They are also linked to the higher planes of substance, including the soul (see Figure 4). All are interrelated, with changes to one structure or type of consciousness affecting the others through energy flows and resonance. The condition of the etheric body is a good indication of the personality health and the qualities of each person.¹⁸ It can show current problems and the potential for our improvement.

A person with limited mental ability or emotional capacity will not understand and will be “on a different wavelength” to someone with greater capabilities. This is because the former is more subject to the limitations of form, and is comparatively more imprisoned or enveloped by it. For them, the influence of matter is relatively greater than the freedom of soul or spirit. Both types of people are equal in being part of the divine spirit, but one enjoys a greater unfoldment of the soul in form, which creates a more comprehensive and capable human structure and human being.

The art and science of development is to gradually change the focus of influence from the lower chakras and planes through the soul to the higher. This happens for individuals, and also for their equivalence in civilizations. This development brings to us a series of

expansions of freedom. It comes from a combination of experience, effort, discipline, attunement, vision and faith.

Causal Influence

Gerber reports a number of experimental studies that establish the reality of the etheric system of nadis and chakras, and the primacy of the etheric structure over the physical structure in causal influence.¹⁹ The etheric structure in the embryos of plants and animals resembles the adult, and becomes established in a matter of hours after sprouting or conception. The etheric nadis and electrical fields guide the space-time structuring of the growing organism from embryogenesis to maturity. These scientific experimental studies confirm Geoffrey Hodson's clairvoyant perception of embryogenesis as "the prenatal etheric mold, which appears very soon after conception, resembles a baby body built of etheric matter, somewhat self-luminous, vibrating slightly, a living being, the etheric projection of the Archetype as modified by karma."²⁰

At this physical level, the etheric matrix is the "attractor" or probability blueprint for the physical organism. The matrix is finely detailed throughout the "potential" young organism and also the mature organism. It forms the "ghost limb" if one is amputated in adult life, and guides regeneration wherever possible²¹. The matrix is of a different octave, or frequency of substance, and resonates with the relevant physical structure. Science is well aware of the existence of forms of different energy frequencies in the same space-time.

The principle is profound, for the esoteric literature proposes that there are a number of levels or frequency bands, as refined grades of substance (valid in terms of wave and particle) existing in the same space-time. The more refined frequency grades are more unitary and powerful than the more physical frequency grades of substance, and causally influence the lower in a cascade effect. The influence can be two-way if the refined frequency is not strongly established in an entity²². The higher also gains experience and wisdom from contact with the lower.

The refined frequency substance links us to comprehensive awareness, and also to unity beyond space-time. At the physical frequency end, there is, perhaps, a similar boundary to this space-time universe, as indicated by the quantum nature of the smallest possible units of space and time (considered further in chapter 7). The essence of development is the gradual evolutionary unfoldment of the more powerful frequencies of energy and consciousness, the refinement of matter, and the steady increase in their energies with usage.

What is It That Attracts?

As a personal "attractor" there is in the heart of each one of us a centre of infinite loveliness. It is hidden by the cloaks of our desires and worries, yet when we allow it, radiates a wondrous love and peace. This is our guiding star. It is there throughout our trying times and our happy times, as we grow, and even throughout eternity. We are rarely aware of it, yet if we can call upon its powerful help with faith, we can be guided into our own very center of peace and upliftment.

However, there are different types of attractor, or blueprint or plan. I have already used three meanings for the term "attractor", two simple and one comprehensive as follows:

The *first* is the most widely used by scientists, as an emergent pattern of activity with a common equilibrium deriving from different starting conditions. An example is similar mature ecosystems that emerge from different earlier environments. Mathematically, the systems converge and settle down to an identical structure and cycle after a period of trial and error, revealing the final attractor pattern.

The *second* is very similar to Sheldrake's morphogenetic field²³, and to the "ghost limb" that is said to exist together with the physical limb. It is the organized energy field called the "etheric body", but with additional emotional, mental and more subtle components. It contains the chakras and nadis of all life forms. Some higher aspects of it are thoughtforms (called memes by some²⁴), ideas, expectations and symbols. It attracts by guiding growth and development (physical, emotional and mental) within broad limits, and so has a genetic component to its structure. Human thoughts and feelings can influence it. This type of attractor is an outcome of the first type through the evolutionary process. It is an evolved force field inherited and changed by people and by all living forms.

The *third* could be called the Great Attractor because it is the primal archetype of the whole. It incorporates all other attractors or archetypes, and exists fractally on all planes of being, within and beyond space-time. Science does not yet have an equivalent theory, though the physicist's search for a variety of grand unified theories is a step in the right direction. There are many scientific theories and findings that support different aspects of the Great Attractor. The wisdom teachings and many religions define a good part of it, and this book sets out to draw parallels between these and modern scientific understanding of aspects of this encompassing great archetype. A fragment of this Great Attractor is that center of infinite loveliness in each one of us that is aching to be allowed to be expressed in each and every one of us.

Contrasting views about each of these three types are that the attractor develops either randomly, or is a pre-determined probable structure, or is purposively designed. The terms usually used in describing them are respectively attractor, probability blueprint, and divine plan. However, the following chapters suggest that the concept of the Great Attractor unifies these views, and in so doing produces evidence of things unseen.

The Son's Journey

The purpose of all of our searching is to increase the quality of human awareness and human life (all aspects of our being) over our many lives. The cycle starts when we are born into the human kingdom and ends when we are born again out of the human kingdom, into the next kingdom of masters and saints. In between we are the prodigal son who wanders far from unity with the divine and then returns. This is the "descent into matter" and worldly things referred to in many myths and then the ascent to return home.

In terms of consciousness and its associated brain wave frequencies, the descent is from the slow delta and theta waves as the predominant frequencies of early humankind, through alpha to beta and gamma in the middle phase of the cycle. The slower waves are closer to divine or unity consciousness, and the faster ones to earthly or diversity consciousness. In this process the slower frequencies are not lost, and are to be found in sleep, daydreaming and meditative states. However, the "dreaming" consciousness of early mankind (and of the baby in modern times) must give way in predominance to the beta consciousness of modern waking adults.

In the ascent from the middle to the end of the cycle the deeper and slower waves are accessed again as predominant frequencies and all are then resonantly harmonized through gamma, from slow to fast. Each level is harmonised with its corresponding plane of being and awareness. As the slower waves are closer to divine consciousness, they are potentially more powerful. Eventually all levels of brain waves are aligned in mutual resonance, bringing about the integrated and enlightened person. This person is then consciously at one with the higher realms and is able to express them in waking awareness.

In the process the total energy level and coherence of a person's substance increases, and the quality and content of all brain wave levels increases. The different levels of being and consciousness contain different harmonics of archetypes, attractors and their degrees of manifestation. As our consciousness rises to the higher levels, we are able to bring down and manifest those encompassing archetypes in our daily life.

It is now clear that the information contained in science and myth is converging. This is beginning to create a powerful theory of life, of our unfoldment and of our place within the whole. We are gradually aligning, and are coming closer to understanding life's design, and to seeing our destiny. We are starting to understand the great Archetype that attracts us to its heart.

¹ Horizontally it is ordered by two groups of seven plus two neutral groups, and the two groups of seven can be collapsed into one group.

² The term "fractal" denotes a structure that is replicated at both larger and smaller scales within the overall structure.

³ The number 7 is frequently repeated in holy books and wisdom teachings, as is the 3, for good reason. The divine unity becomes a duality of polarity, and from this becomes a trinity as a force field is created between the polarities in order to manifest the divine plan in space-time. From the third factor, four more principles are created to make the seven. This is beautifully captured by the unity of white light, which is composed of the three primary colors, and when passed through a triangular prism (symbolic of the trinity) it forms the seven colors of the rainbow. The wisdom teachings state that all energy or light is life and consciousness. As above, so below.

"Nature, embraced by Archetypal Man, brought forth a most admirable wonder; for He, having Light and Life and the Harmony of the Seven Spheres, Nature delayed not, but immediately produced septenary man in correspondence with the natures of the Seven."

- Hermes Trismegistus

The Shrine of Wisdom (p.36; and source of all subsequent quotations of Hermes Trismegistus)

⁴ The term "space-time" is used in accordance with the theories of relativity in physics to mean the combined dimensions of space and time, a point in space-time being located by the 3 dimensions of space and 1 of time. That which is beyond this description of space-time can be said to exist in hyperspace, protospace or mathematical space providing these are concepts beyond space-time dimensions.

⁵ Readers familiar with esoteric human structure can skip the rest of this chapter.

⁶ This substance is energy vibrating at different frequencies. The "spiritual substance" also includes two higher planes of more refined human substance within space-time, and two even higher principles that exist beyond space-time. For now, it may be useful to imagine 7 levels of human awareness "at right angles" to 7 planes of substance (including those beyond space-time for ease of thinking).

⁷ We are able to measure some aspects of the etheric body electrically by using Kirlian photography and by mapping bioenergy life fields. See Oldfield & Coghill (1988), Gerber (1988), Hunt (1989), Smith & Best (1989), Brennan (1998), Becker & Seldon, (1985), Scott-Mumby (1999).

⁸ There have been many studies, including Netherton & Schiffrin (1978), Moody (1981), Cockell (1996), Whitton & Fisher (1986), Wambach (1979), Weiss (1988, 2004), Eadie (1992), Sutherland (1992), Newton (2002), Atwater (1988).

⁹ See Doane (1971), Gaskell (1960), Campbell (1974), Singh (1970), Wilber (1980, 1996, 1997). Wilber differentiates 17 levels of consciousness that he reduces to 9. In choosing 7 levels, I am comparing wisdom tradition numbering to those of modern social sciences.

-
- ¹⁰ See <http://www.gnosis.org> for many source details.
- ¹¹ In his books, Neale Donald Walsch avers that our life situation is not so much a classroom as a choice in expression of innate potential. I agree with his big picture viewpoint, but see a real learning process taking place as we awaken to our potential, hence the classroom.
- ¹² Unless otherwise stated the Hermes Trismegistus quotes are from the Shrine of Wisdom book, 1995.
- ¹³ Karma is the natural law that causes us to reap what we sow, if over lifetimes, and is also called the law of cause-and-effect.
- ¹⁴ For example, Hindu, Buddhism, Tao, Islam, Jewish, Ancient Egyptian/Assyrian/Chaldean/Greek, Zoroastrian, also the old Scandinavian/Vandal/Tartar, Druids, Aztec, Maya, Inca, and some American Indians. See Doane (1971, ch.35).
- ¹⁵ In *TWM*, p.522,
- ¹⁶ A number of wisdom teachings state that the human soul enters the body permanently at the time of birth. Prior to then, the foetus has a lower level of soul, though it may be visited from time to time by its human soul-to-be.
- ¹⁷ The term *kundalini* refers to the fundamental energy of substances including atomic energy, and is called by other names such as *ch'i*, *fohat* or *prana*. It is known symbolically as the dragon or serpent energy. See Gopi Krishna (1988), Avalon (1953), Arundale (1938), Muktananda (1979), Satyananda (1976), Singh (1970), Bailey (TCF 1925), Campbell (1975).
- ¹⁸ See Hunt (1989), Brennan (1998), Scott-Mumby (1999), Karagulla (1967), Bailey (*EH*).
- ¹⁹ Gerber (1988, chapters 4, 5 & 6).
- ²⁰ Quoted by Gerber (*ibid*, p.163) with more detail.
- ²¹ Some scientists suggest that the ghost limb phenomenon can be explained by impulses in the central nervous system. However, this explanation does not test for possible causality between a ghost limb possibly stimulating nerves and/or nerves influencing a ghost limb. It does however establish the link between nerve stimulation and some feeling as if the physical limb was there.
- ²² The issue of frequencies is more complicated, as there are frequencies of substance and much higher frequencies of consciousness. Over the period of evolution, the frequency of human substance is raised. However, the frequency of consciousness as depicted by brain waves increases from a predominance of low at the beginning to high in the middle. Towards the end of evolution the low frequencies again predominate but in train or harmony with the high. There are also Very High Frequencies of consciousness not recorded by brain EEGs. In addition, gamma frequencies (around 40hz) are thought to integrate experience and ideas into broader frameworks. Both the higher and lower ends of the frequency spectrum can have a powerful influence on our consciousness and body. We will look at frequencies again in chapters 6 & 9.
- ²³ Rupert Sheldrake (1981).
- ²⁴ Richard Dawkins (1989)